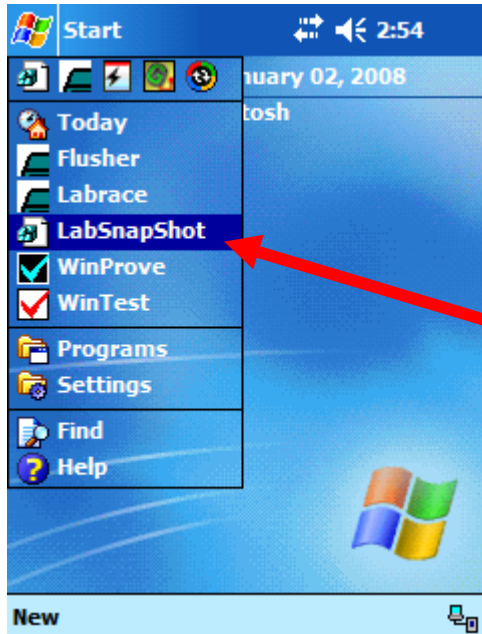


# EMERGENCY IMPORT TOOL

**Case:** The Database and Settings are already transmitted from PC to Handheld, BUT are still not imported on the Handheld. If this is the case, force the Emergency Import Tool, by doing the following (on the Handheld only):

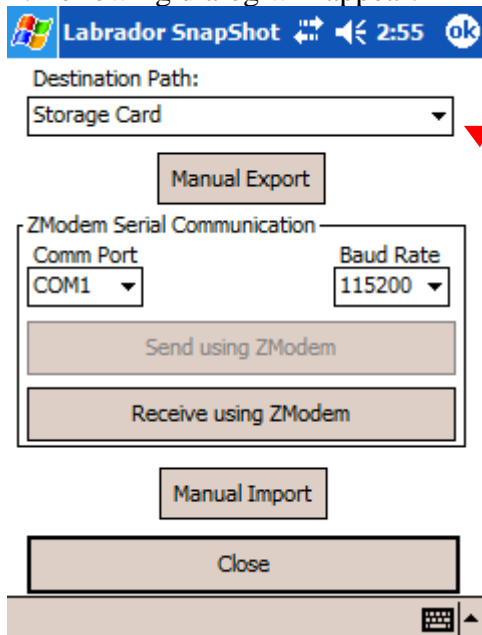
1. From Start menu



Start, System, Menu's, check LabSnapShot, then back out. May want to uncheck when finished.

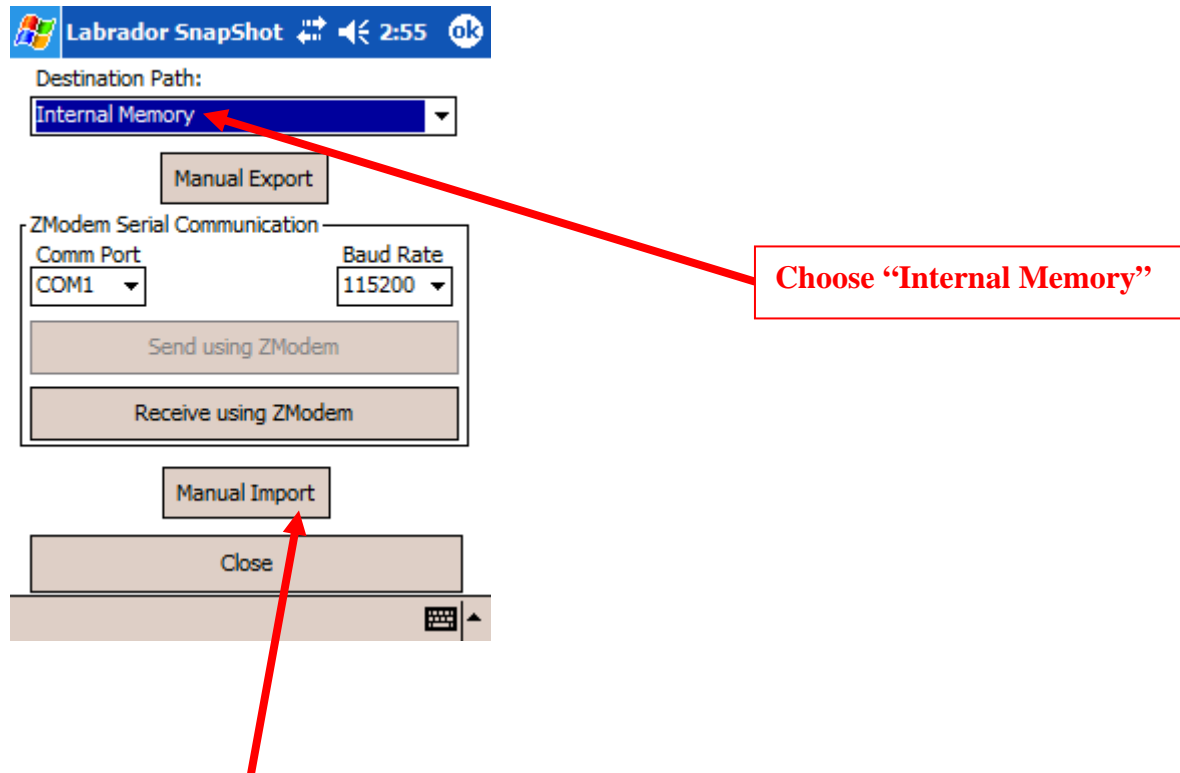
Choose "LabSnapShot"

2. Following dialog will appear:

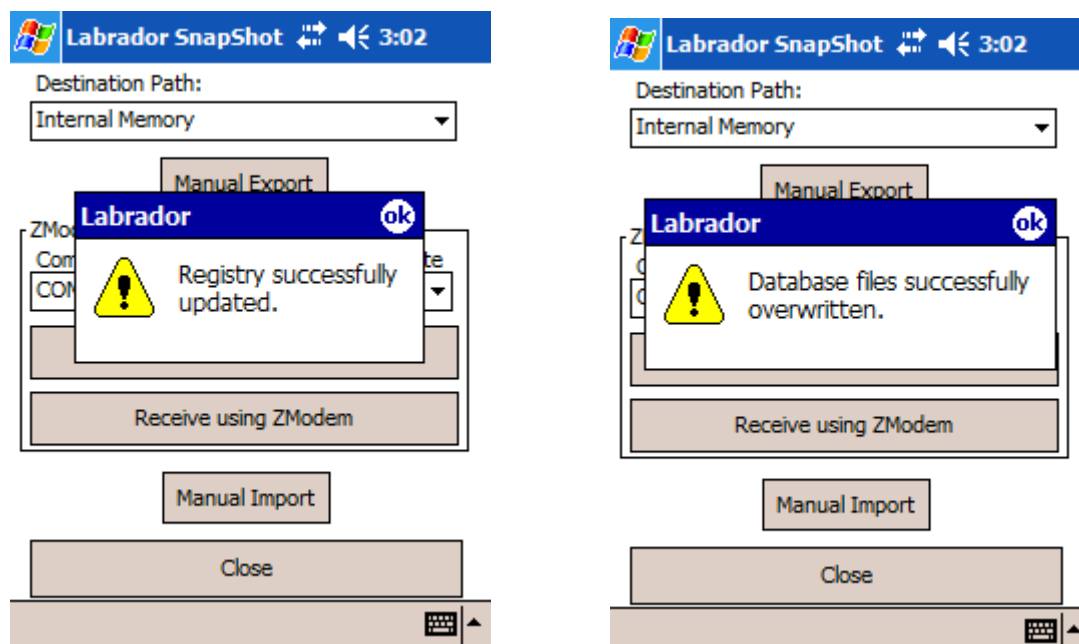


Tap on "Destination Path" combo box

3. Tap on “Destination Path” combo box and choose “Internal Memory”



4. Tap “Manual Import” button. After that you have to see consecutively 2 message boxes (if you sent to Hand held both “Settings” and “Database”):



If you see both message boxes, shown above, then the Database and Settings were successfully updated. If you updated only one of them, you will see only one (corresponding) message box.

5. Finally tap “Close” button.