



*F-RAMS, Inc.*

... Where Concepts Become Reality ...

Georgetown, Texas



VOLUME CORRECTED TO 60°F (15°C)

81

F-R-N-S

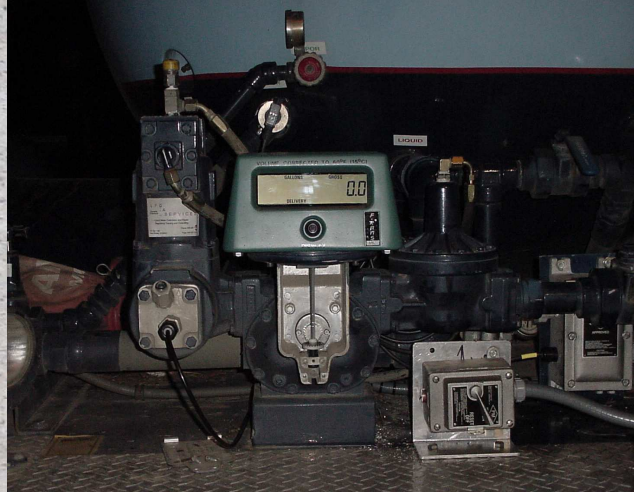
16301

F-RAMS INC.

# Home Delivery-LPG

F-RAMS® is a fully-integrated, electronic system that controls all vehicle delivery operations. Unlike older electronic systems, F-RAMS® is designed specifically for a market that is always undergoing change. The F-RAMS® modular design and open software architecture provide you with a tailored system that is expandable and upgradeable to keep up with changing requirements and new technologies as they arrive and to significantly reduce field maintenance and support.

F-RAMS® Modular



design allows you to start with a simple "Pump-N-Print" and when you're ready you can upgrade your fleet over time.

F-RAMS® software gives you complete flexibility for Ticket format, Preset and Password Protection.

With F-RAMS® and its family of products, you can improve your Cash-flow, Accuracy, and Speed of delivery.

Certified Intrinsically Safe by Factory Mutual - It's the Safest System on the Market.

- Time Saving
- Step Pricing
- Driver Messaging
- Driver Sign-In Screen
- Whole Routes Can Be Downloaded to the Mobile Computer
- Snap - On for Quicker Installations
- Interfaces Other Handhelds
- Preset Price or Gallons
- Multi-Point Calibration
- Customer Search Engine Name/Tank # / Account #
- Stores up to 10,000 Accounts
- Modular Design

## F-RAMS® Features:

- Off the Shelf Standard Components
- Extremely Low Torque - Longer Life - Eliminates Added Wear to Meter
- Fiber Optic Eliminates Noise
- Factory Mutual Approved
- Safest Electronic Register on the Market
- One Source Company
- Electronic Calibration - No Change Gears to Change
- Standard Hand-Held Interface

F-RAMS® is the future ... everything else is the past.





# F-RAMS CE 2100 Handheld

Delivers maximum performance and reliability in lightweight and extremely rugged design that's easy to carry. The waterproof F-Rams weighs just 17 ounces, and meets military specification for drop, vibration and both high and low temperature operation. The F-Rams works wherever and whenever you need it. The F-RAMS® System and Software work to significantly reduce office work, maintenance and support.

## Environment

### Operating Temperature

-22 to 140° F ( -30 to 60° C)

### Humidity

MIL-STD 810F Method 507.4

### Water

IP67, Sealed against accidental immersion (IM for 30 min)

MIL-STD 810F, Method 512.4 Procedure I

### Drop

MIL-STD 810F, method 516.5

Procedure IV 26 Days from 4ft. On to Plywood over Concrete

6 Additional Drops @ -4°F

6 Additional Drops @ 140°F

F-RAMS® software gives you complete flexibility for Ticket format and Password Protection.

With F-RAMS® and its family of products, you can improve your Cash-Flow, Accuracy and Speed of Delivery. Certified Intrinsically Safe by Factory Mutual - It's the Safest System on the Market.

- Full Accounting Capabilities
- Alpha or Numeric Entry
- Inventory Control
- Credit Card Swipe Available
- Holds Up to 5000 Customers and is Expandable
- Expandable Memory - 1 Type I and 1x Type II Compact Flash Slots
- Touch Screen
- Main Rechargeable Battery with Built-in Back Up Battery
- CE Windows Pocket PC® / Windows Mobile 2003
- Power Boot Module
- MIL-STD 810F—IP67—810
- Bluetooth
- USB or Serial FS232 Connection
- Optional LAN, GPS and Wireless Connection
- Rugged Waterproof Design
- Display 240 x 320 (1/4 VGA) TFT with Led Front Light
- System Memory 64 or 128 MB with 16 MB Reserved

# F-RAMS CE 2100 Handheld

# F-RAMS

## F--RAMS® Features:

- ActiveSync® 4.2
- 15 Hour Continuous Input and Data Display
- Step Pricing
- Miscellaneous Sales
- Change Pricing
- Item Search
- Multiple Products/Change Multiple Products at One Time
- Enter Purchase Orders
- Add to and View Existing Invoices
- Department Numbers
- Locations
- Discounting
- Switching in Program From Fleet to Bulk
- Wireless LAN Transfer
- Microsoft Access Database
- Inventory Control System
- Custom Software
- Billed at the Time of the Delivery
- Collect the point of Origin
- Vendor Locations
- Optional Available Signature Capture
- 200 MHz or 400 MHz Intel PXA255 Xscale Processor
- 3800 mAh NiMH Rechargeable Pack Interfaces: Serial RS-232C
- USB Accepts Standard Computer Cables
- One Source Company

# F-Rams 2100

1. **Ultra-Rugged** - The F-Rams meets stringent military standards (MIL-STD-810F) for drops, and it operates in temperature extremes from -22 to 140° F (-30 to 60° C). It's also fully weatherproof, with an IP67 rating, making it impervious to water and dust. You can work in the rain, drop the 2100 in the mud, or keep working in very hot or cold temperatures. The sturdy 2100 won't back down from the environmental challenge!
2. **Long-Life Battery** - You need a data collector that gives you a full day's work. The 2100 provides 15 hours of operation with the standard rechargeable NiMH battery, or up to 16 hours with the optional AA battery boot. The 2100 comes with either a 200 or 400 MHz X scale processor for speed and power conservation.
3. **Versatility** - Two separate CompactFlash (CF) slots let you add memory, wireless communication, GPS and more. They give you various options for collecting and transferring your data. And an optional Extended CF-Cap™ will keep larger cards protected to the same rugged standards. All 2100's come with both serial and USB ports, two stylus pens, a hand strap and ten screen protectors as standard equipment.
4. **GOOD Value** - For the price, the 2100 is a great value for being such a rugged data collector. It's a very reliable handheld - a tool manufactured with the latest technology. Evaluate the features and durability, and you'll choose the 2100!
5. **Windows Mobile** - Using the industry-standard operating Windows Mobile® system means compatibility with your work-related software applications. You also have access to Pocket versions of Word, Excel, Outlook and Internet Explorer - all on the same data collector.
6. **Sunlight-Readable Display** - The F-Rams has a bright and clear color touch screen with a front light. You can work with the 2100 outdoors on the sunniest day and still easily see what's on the screen.
7. **Lightweight** - At just 17 ounces, the 2100 is easy to operate all day long. It's comfortable in the hand and ergonomically designed for all-day use.
8. **Data Security** - The 2100 has plenty of non-volatile Flash Storage to keep your data secure even if there is an unexpected power loss. A back up program from SPRITE is also included at no additional charge. You can even schedule automatic backups.
9. **Proven** - Users and reviewers agree that this is one rugged and powerful data collector. The extraordinary 2100 has proved itself in the field by people just like you who put it to the test every day.
10. **Warranty** - All 2100's are guaranteed. Even when the one-year warranty expires, F-Rams offers second & third year extended warranty options. You can purchase extended warranty coverage anytime during your first year of ownership. The cost of a year of extended warranty is approximately equal to one service charge.

F-RAMS CE 2100 Handheld

F-RAMS Inc.



# F-RAMS Interfaces



MID:COM — e:Count



Veeder-Root  
EMR<sup>3</sup>



F-RAMS



Liquid Controls® — LCRII®



Actaris — E4000

The F-Rams 2100 interfaces with all of these other fine Electronic Registers. With F-Rams you can improve your Cash-Flow, Accuracy and Speed of Delivery. F-Rams CE-2100 delivers maximum performance and reliability in a lightweight and extremely rugged design that's easy to carry. The waterproof F-Rams weighs just 17 ounces and meets military specifications for drop, vibration and both high and low temperature operation.

F -RAMS, INC.  
3003 DAWN DR.  
GEORGETOWN TX 78628  
PHONE (512) 868-8101  
FAX (512) 868-9115

=====

DUPLICATE INVOICE

=====

Truck : 3  
Driver : Kelly, Bob  
Ticket # : 13

-----

Delivery Summary :  
CEDAR CONSTRUCTION  
885 W. MILWAUKEE AVE  
MILWAUKEE WI 53200  
Account # : 8417

-----

Itemized Deliveries :

Tank/Product	Gal/\$
Gas Check	
1.000 x \$75.00000	75.00
5898585985	10.0 -75.0 %
LPG	156.0

-----

Invoice Summary :

LPG Unit Price	1.72000
New Charges	343.32
Tax Amount	28.16
Total This Delivery	371.48
Total Due	371.48

-----

If paid within 10 days,  
please pay \$ 367.87

-----

Thank You For Your  
Business!

# Sample Tickets

F -RAMS, INC.  
3003 DAWN DR.  
GEORGETOWN TX 78628  
PHONE (512) 868-8101  
FAX (512) 868-9115

=====

DUPLICATE INVOICE

=====

Truck : 3  
Driver : Kelly, Bob  
Ticket # : 12

-----

Delivery Summary :  
SHOTZ BREWING  
4582 SOUTH BREWER DR.  
NEW BERLIN WI 53012  
Account # : 8375

-----

Itemized Deliveries :

Tank/Product	Gal/\$
Rental	8.0 -75.0 %
LPG	100.0

-----

Invoice Summary :

LPG Unit Price	1.49000
New Charges	149.00
Tax Amount	14.45
Total This Delivery	163.45
Total Due	163.45

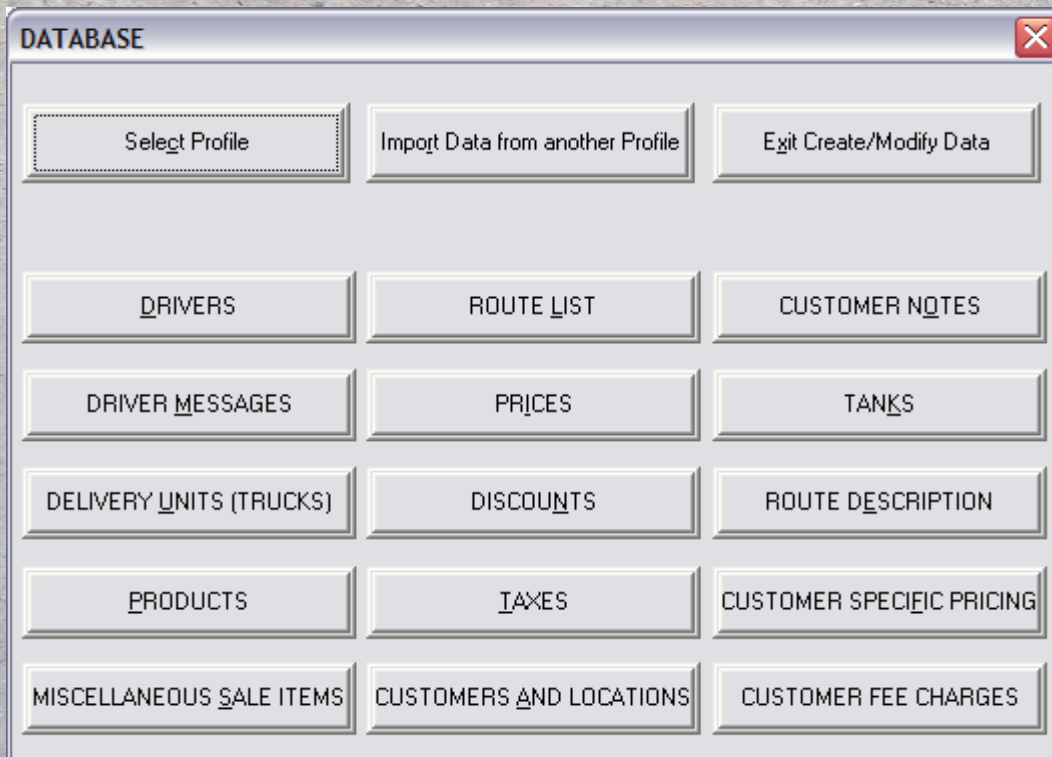
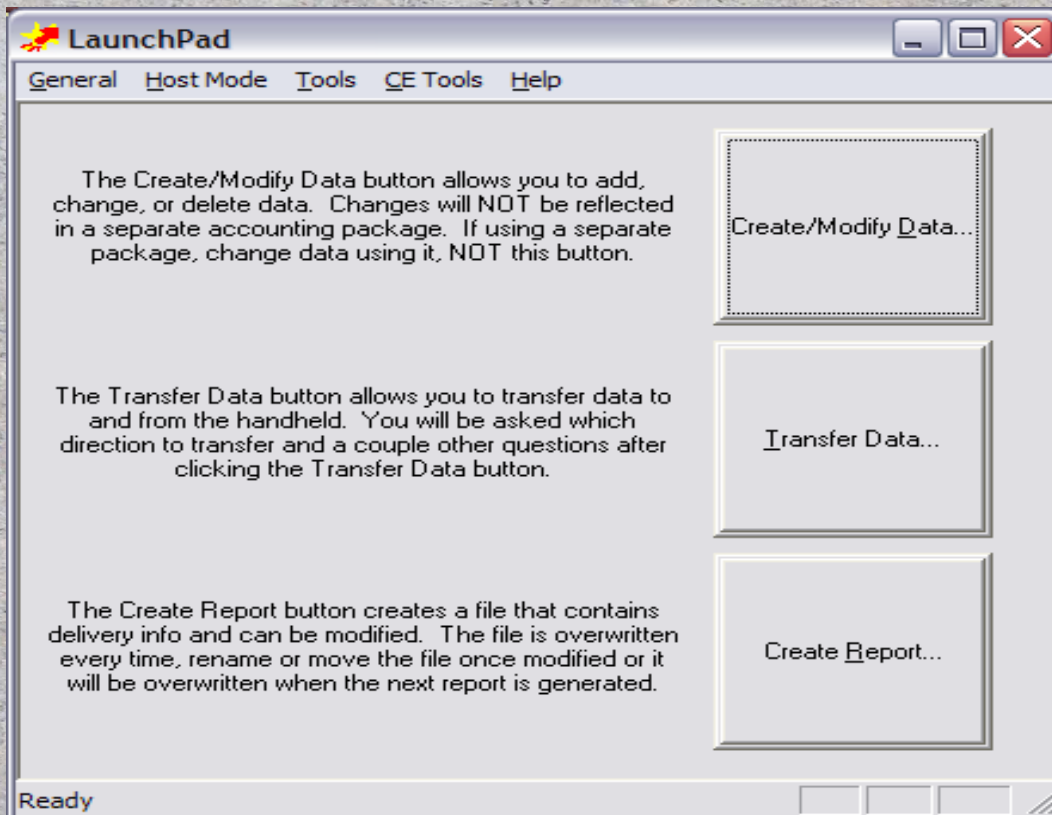
-----

If paid within 30 days,  
please pay \$ 162.40

-----

Thank You For Your  
Business!

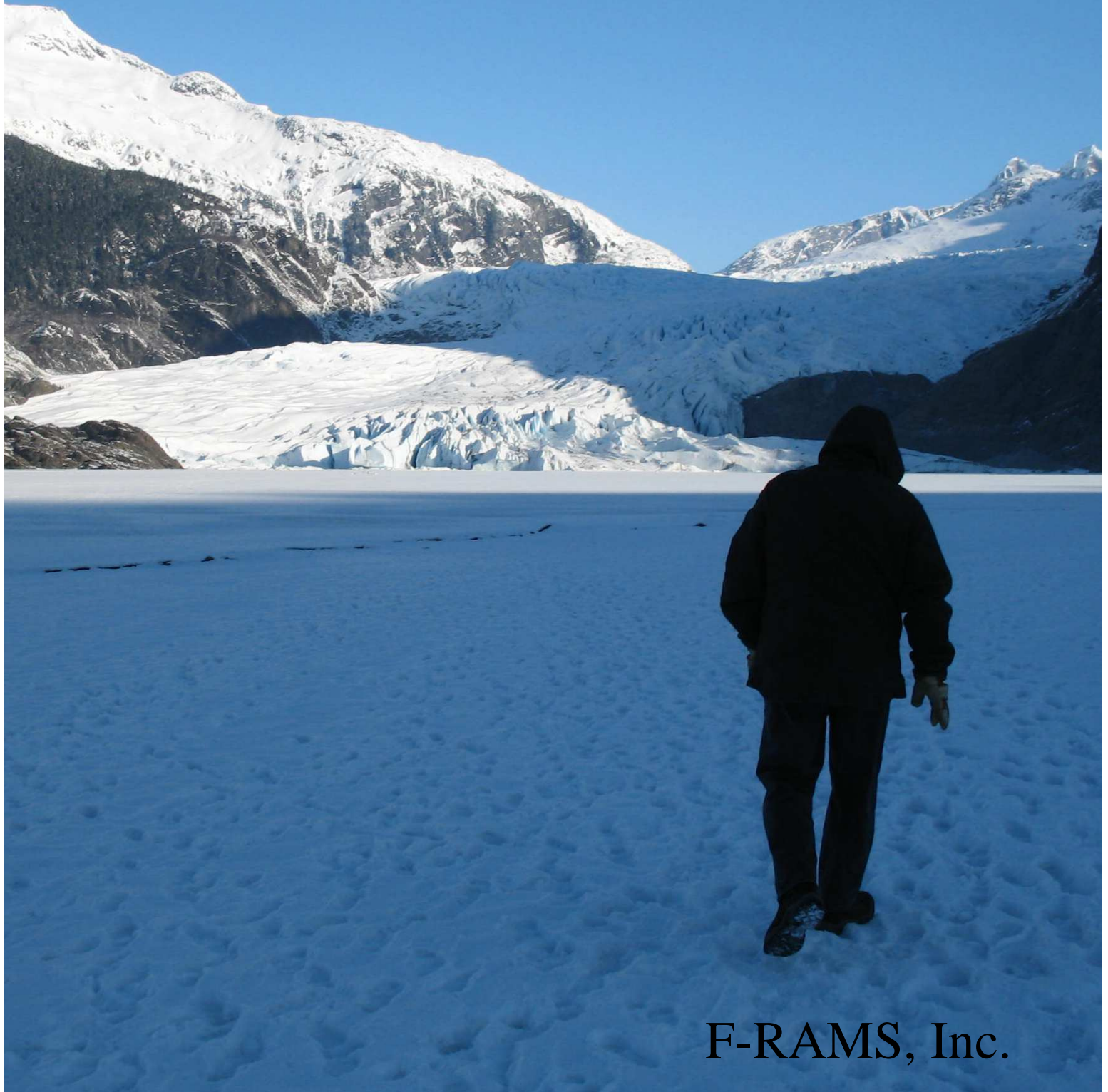
# F-RAMS CE 2100 Handheld



- LaunchPad Interfaces to Windows 95, 98, 2000 and XP
- Transfer Settings and Data From a Handheld to another Handheld for Easy Configuration
- Assign - Tanks, Trucks, Products, Multiple Locations, Drivers, Specific Customer Pricing, Discounts, Taxes, Non-Taxable Fees, Routing and Miscellaneous Charges
- Add Driver Notes and Customer Notes
- Step Pricing
- Trip Charges
- Add Customer Charges
- Balances 30-60-90 Days
- Remote Software Updates/ Upgrades
- Different Locations with Billing Addresses
- Use the customer Note Field as an Electronic Route Card
- Customer Fee Charges
- Manage Password Protection for Data and Prover
- Import and Export to Excel
- Setup Multiple Profiles

Going the Distance

For Our Customers.



F-RAMS, Inc.



F-RAMS, Inc.

Suite 603

3613 Williams Dr.

Georgetown, TX 78628

Phone (512) 868-8101

Fax (512) 868-9115

E-mail:

[F-rams2@mindspring.com](mailto:F-rams2@mindspring.com)

[www.f-rams.com](http://www.f-rams.com)